



## MULTIPLE SITE CONNECTION WITH MOTOTRBO™ RADIOS & APPLICATIONS

<b>Client</b>	Edinburgh Napier University
<b>Industry</b>	Higher Education
<b>Products Supplied</b>	02 x DR 3000 Repeaters 25 x DP 3601 portables 02 x DM 3601 mobiles TRBOnet Enterprise 3.6 Dispatcher
<b>Key Benefits</b>	New Digital Technology Intelligent Channel Sharing Multi site/ Roaming Communications Increased Safety & Security for Staff Increased Staff Efficiency

### OUR CHALLENGE

Provide a reliable multi site radio solution to eliminate weak spots, protect staff and monitor all users throughout multiple sites.

Edinburgh Napier University is divided between six campuses in the south-west of the City of Edinburgh. The University is a higher education institution in Scotland with over 17,000 students, including nearly 5,000 international students, from more than 100 nations worldwide.

### THE SOLUTION

MOTOTRBO™ Digital Radio Solution with integrated TRBOnet™ Dispatcher Computer monitoring solution.

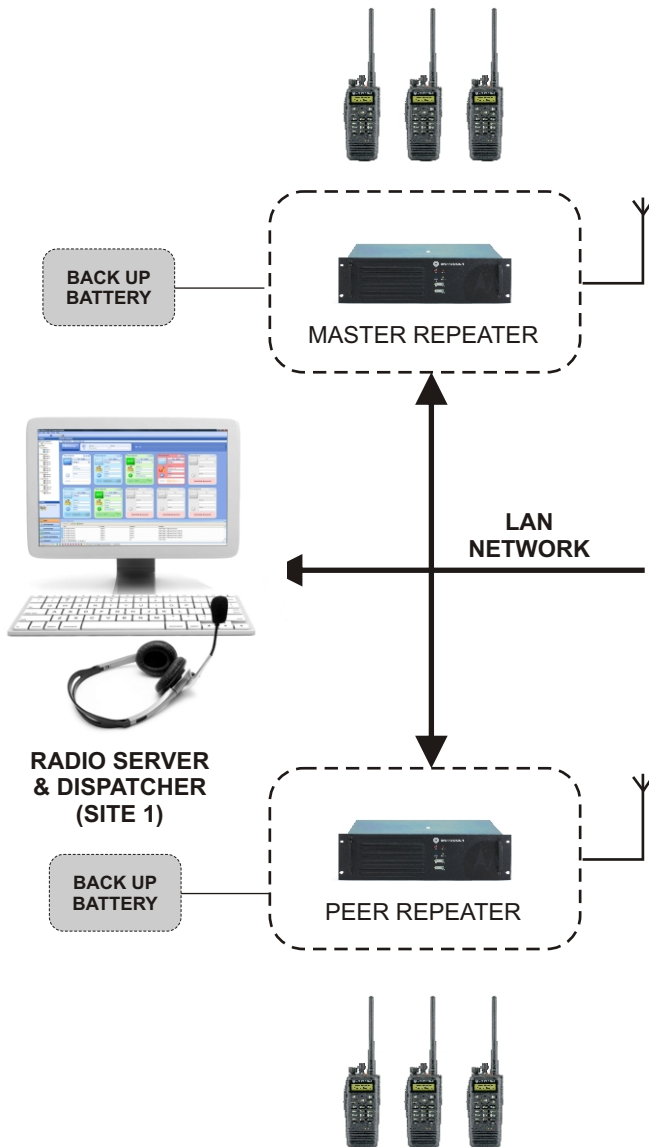
### BACKGROUND

Previously utilising an analogue radio system based at the Universities Main Campus which produced weak / dead spots and was causing issues both internally and externally on certain Campuses. Causes identified mainly to geographical / urban obstacles and inter-site distance issues.

The University needed a seamless communications system that could monitor all calls, staff movements and give coverage across multiple campuses.

*Since Project out set DCRS had provided a very constructive and supportive service during the installation and training phases, this level of service provision has continued with appropriate responses to all our needs as and when required.*

*Douglas Dack, Security Manager. Edinburgh Napier University*



## THE PROCESS

Implementation began in June 2012 and involved utilising two current sites to install MOTOTRBO™ DR3000 repeaters and antenna equipment to give the estate the wide area coverage (6 miles) they required.

The system comprises of GPS enabled MOTOTRBO™ DP3601 Hand portables and DM3601 Mobiles which are installed into vehicles that move across the campuses.

There are dedicated call groups for security and an all-call feature which will override communications in the case of an emergency situation. All hand portables are all set with Emergency Features activated by their Orange Button and other standard features such as: Lone worker, text messaging, individual calling & radio stun/revive.

With staff continuously travelling between sites the MOTOTRBO™ DR3000 Repeaters allow users to seamlessly roam and connect to the transmitter with the strongest signal thus never losing communication with the main operators. This has now ensured they no longer experience coverage issues throughout the Estate and has increased safety and overall protection of the staff.

The addition of the TRBOnet™ Enterprise computer monitoring dispatch software has also given the team access to a range of customised features such as: text messaging, voice recording, voice dispatching, GPS location positioning and comprehensive reporting of all radio activities.

## THE IMPACT

Through IP site connect the Estate now has a multiple site, easy to manage system that can grow whenever required allowing them to add in further repeaters, hand portables or, mobiles should the coverage / users expand.

With all hand portables set with a roaming facility all staff can focus on their job and not be distracted.

Voice and data integration through TRBOnet™'s Enterprise computer monitoring dispatch software has given the University Estate a single system which eliminated the need for separate site controllers and allows them to work with enhanced operational effectiveness.